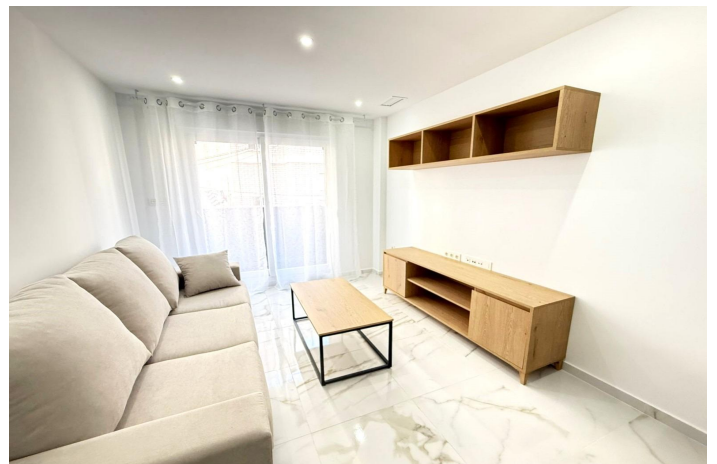
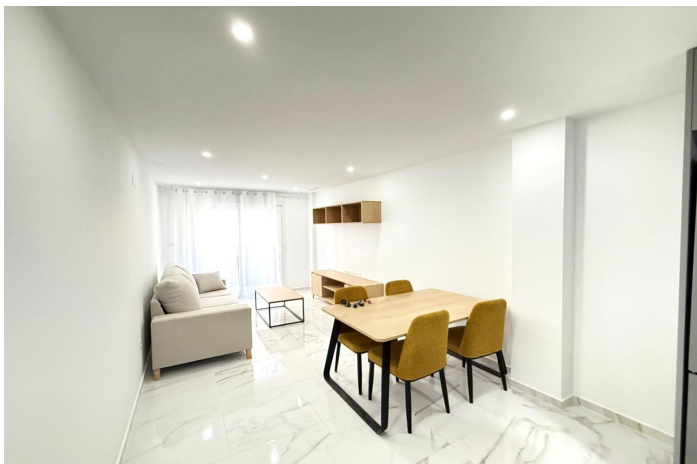




Lejlighed til salg i Torrevieja, Torrevieja

200.000 €

Reference: MS38684 Soveværelser: 2 Badeværelser: 2 Byg Størrelse: 92m²





Costa Blanca South, Torrevieja

Modern 2-bedroom flat with balcony, sauna and barbecue area in Torrevieja This newly built modern flat, located on the first floor of a contemporary building, is ready to move into. With a functional and elegant design, it has 2 spacious bedrooms and 2 complete bathrooms, designed to offer comfort and privacy. The day area is composed of a bright living room with direct access to a pleasant balcony, perfect to take a breath of fresh air or enjoy a cup of coffee. The integrated and modern kitchen is connected to the main space, creating a comfortable and practical environment. In addition, the flat has an interior courtyard that provides natural light and additional ventilation. Among its quality features, the underfloor heating system provides a comfortable temperature all year round. But what really makes this flat special are the communal areas: on the top floor of the building there is an exclusive wellness area with sauna and a barbecue area, ideal for relaxing or sharing moments with friends and family. LOCATION: Torrevieja is in the province of Alicante (Costa Blanca). It is famous for its Mediterranean climate and its coast. We cannot forget its promenades where we can find some restaurants along the fine sandy beaches. It also has many excellent beaches such as Playa de los Náufragos, Playa de los Locos and Playa de la Mata. Therefore, it is considered a remarkable tourist town where the environment takes an important place as an important tourist attraction. In addition, we can find many shopping centres (Habaneras, La Zenia Boulevard), golf courses, sport centres, hospitals (such as Hospital Universitario de Torrevieja) and airports such as Alicante Airport (35 km away) and Region of Murcia International Airport (43 km away). DISTANCE TO THE SEA: 1000m Should you have any question do not hesitate to contact us!



Funktioner:

Har Main Electric
Tæt på busrute
Tæt på træer
Nær kommercielt center
Elevator/lift

møbleret
Strand: 1000 meter
Tæt på Skoler
BBQ
Tæt på børneparker

Gårdhave
Solarium: Ja
Brugbar byggeplads: 85 Msq.
Dobbeltværelser: 2